



# MEET THE ALPHA IN THE FIGHT AGAINST FLEAS



## FAST-ACTING

Wipes out 90% of fleas within 12 hours of application.<sup>2</sup>



## LONG-LASTING

Kills 100% of newly arriving fleas for 4 full weeks.<sup>2</sup>

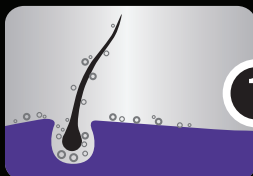


## SAFE

Tested and approved at 1x, 3x and 5x the recommended dose.<sup>2</sup>

## HOW ACTIVYL<sup>®</sup> SPOT-ON WORKS

Activyl<sup>®</sup> is the monthly spot-on flea treatment that works like nothing else.



1

Activyl<sup>®</sup> is applied to pet's skin and coat.



3

Inside, Activyl<sup>®</sup> becomes active, paralyzing the flea.



2

Fleas absorb Activyl<sup>®</sup> by coming into contact with the skin - not biting.



4

Unable to feed, the flea dies.

# HOW TO APPLY ACTIVYL<sup>®</sup> SPOT-ON

**1** Remove one applicator from packaging.

**2** Hold applicator in an upright position away from your face and snap the tip open by bending and folding it back on itself.



**3** Part pet's hair.



## CATS

Place applicator tip against the skin at the base of skull. Squeeze applicator firmly, applying entire contents directly to skin.



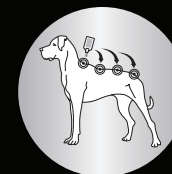
## SMALL DOGS

Place applicator tip against the skin at the base of shoulder blades. Squeeze applicator firmly, applying entire contents directly to skin.



## LARGER DOGS

Place applicator tip against the skin at the base of the shoulder blades. Squeeze applicator firmly, applying entire contents directly to skin. Distribute the solution in up to four different places along the back from the shoulder to the base of the tail.



**4** Wash your hands and avoid contact with treated area until dry.

## ACTIVYL<sup>®</sup> PRODUCT LINE



### FOR DOGS

- Toy - 4-14 lbs
- Small - 14-22 lbs
- Medium - 22-44 lbs
- Large - 44-88 lbs
- X-Large - 88-132 lbs



### FOR CATS

- Kitten - 2-9 lbs
- Cat - > 9 lbs