

# KERATO-SEBORRHEIC DISORDERS

## KERATO-SEBORRHEIC DISORDERS

Abnormal production and composition of the cutaneous lipidic film, resulting in a **seborrhea**

+

**Keratinization disorder** (essentially an excessive production of scales by the epidermis)

## THESE ISSUES ARE A FREQUENT REASON FOR CONSULTATION



## ESSENTIAL 6® SPOT ON



### REGULATING AND MOISTURIZING CARE:

- Hydrates, and reinforces the cutaneous barrier
- Diminishes dandruff
- Deodorizes
- Regulates skin and coat dryness or greasiness
- Reduces hair loss
- Protects the skin

### KEY INGREDIENTS:

**Moisturizing and restructuring action:** Neem and hemp seed oils, rich in EFA

**Sebo-regulating, antidandruff and deodorizing action:** Synergy of 10 essential oils: rosemary, lavender, clove, cedar, oregano, peppermint, camphor, curcuma, gaultheria, tea tree

**Antioxidant action:** Vitamin E

**Easy to use, helps space out shampoo frequency & can substitute the daily in-take of oral omega 3 & 6 fatty acids**

*Initial care: 1 pipette/week for 2 consecutive months - Maintenance: 1 pipette every 2 weeks as long as necessary  
For small mammals (rabbit, ferret, guinea pig, hamster, rat, mouse...), apply a few drops to 1 pipette according to the animal size.*

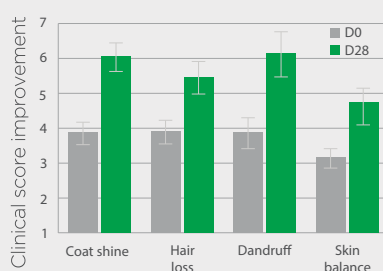
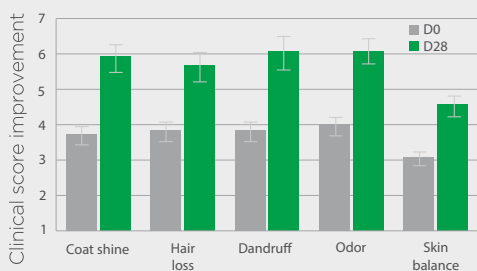
## KERATO-SEBORRHEIC DISORDERS MULTICENTRIC OPEN STUDY<sup>1</sup>



**Effect on 210 dogs.** Weekly application of Essential 6® spot-on for 4 weeks.



**Effect on 79 cats.** Weekly application of Essential 6® spot-on for 4 weeks.



## SEBACEOUS ADENITIS

Publication Veterinary Dermatology Dr. R.S. Mueller



## ICHTHYOSIS

Publication Veterinary Dermatology Dr. T. Olivry



1. Bensignor E, Nagata M, Toomet T. Preliminary multicentric open study for dermocosmetic evaluation of a spot-on formulation composed of polyunsaturated fatty acids and essential oils on domestic carnivores. Pratique médicale et chirurgicale de l'animal de compagnie 2010;45:53-57.